

2011 Delaware Cooperative Extension Horticulture Short Courses



Cooperative Extension

COLLEGE OF AGRICULTURE & NATURAL RESOURCES

Happy New Year from Delaware Cooperative Extension!

Enclosed is the 2011 Delaware Cooperative Extension Ornamentals Short Course schedule. This year, our courses begin in February and continue through spring with an insect short course, and beneficial insect identification. The schedule includes workshops on topics such as integrated pest and disease management, groundcovers, trees and shrubs, maintenance and more. Each course is reasonably priced to accommodate your needs and is offered at various times and locations throughout the spring season. We are offering courses in each county that address a variety of horticultural subjects, offer nutrient management and pesticide credits to help you maintain your certifications, and provide courses that will introduce you to your county's horticulture agent and our state specialists. To register, contact your county office, add your name to the class list, and pay at the door.

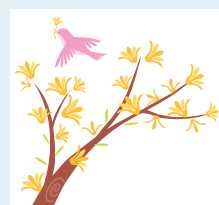
Delaware Cooperative Extension has many services to offer you throughout the year in New Castle, Kent and Sussex counties. You can drop off plant specimens, request assistance in identifying plants and their problems, pick up soil tests and informational pieces such as plant, insect, and disease fact sheets, our *Plants for a Livable Delaware* series, and registration forms for our Ornamentals Hotline publication (a newsletter designed to fit our industry's needs during the height of the season). Finally, visit our website for additional up-to-date information <http://ag.udel.edu/extension/horticulture/>.

We look forward to working with you in the future. If you need anything, please don't hesitate to call or e-mail.

Sincerely,

Tracy Wootten
Extension Agent
wootten@udel.edu
(302) 856-7303

Carrie Murphy
Extension Agent
cjmurphy@udel.edu
(302) 831-2506



Greenhouse Integrated Pest Management Workshop

February 12 9:00 a.m. -12:00 noon Credits: 3 Pest. (Category 03), 1 CNP

Delaware Department of Agriculture, Dover, DE (Free)

Learn the basics for IPM management in a greenhouse business. Topics include: local IPM greenhouse visits summary, scouting, common diseases, biological control and common insect pests.

Instructors: Brian Kunkel, Bob Mulrooney, and Jeff Brothers

2011 Delaware Cooperative Extension Horticulture Short Courses



Cooperative Extension

COLLEGE OF AGRICULTURE &
NATURAL RESOURCES

Groundcover Series

This series provides an overview of managing groundcovers in the landscape. (Cost \$10/session)

Culture of Groundcovers

Learn how various different groundcovers can be used in the landscape to reduce maintenance and improve landscape health.

February 9 4 p.m. - 5:30 p.m.
New Castle County Extension Office, Newark, DE
February 17 4 p.m. - 5:30 p.m.
Sussex County Extension Office, Georgetown, DE

Instructor: Sue Barton

Credits: 1.5 Nutrient, 1 CNP

Pests of Groundcovers

Learn about disease and insect pests that commonly attack these plants in the landscape and their control options.

February 17 4 p.m. - 6:00 p.m.
New Castle County Extension Office, Newark, DE
February 24 4 p.m. - 6:00 p.m.
Sussex County Extension Office, Georgetown, DE

Instructors:
Brian Kunkel & Bob Mulrooney

Credits: 2 Pest., (Categories 03,02,06)
1 CNP

Landscape Information Session

Credits: 1 Pest., (Categories 03,02)
1 Nutrient, 1 CNP

March 10 4 p.m. - 6 p.m.
New Castle County Extension Office, Newark, DE (Cost \$10)

Need solutions to common problems encountered in the landscape? Looking for more information? What can Extension do for you (soil tests, compost bins, diagnostics, short courses and more)? In this roundtable session, network with your colleagues while we answer your landscape questions, introduce you to valuable resources, and create a forum in which to share your personal experiences.

Instructor: Carrie Murphy

Insect Short Course

LIMIT 10 Participants

Credits: 3 Pest. (Categories 03,02) &
1 CNP / Each Session

March 29 and 31 4 p.m. - 7 p.m.
Room 12 Townsend Hall, University of Delaware, Newark, DE (Cost \$10/session)



Learn about scale biology and use microscopes to identify important ornamental insect pests.

Instructor: Brian Kunkel

2011 Delaware Cooperative Extension Horticulture Short Courses



Cooperative Extension

COLLEGE OF AGRICULTURE &
NATURAL RESOURCES

Pruning Trees and Shrubs

Credits: 1 CNP, (Possible ISA)

March 22 4 p.m. - 6 p.m.

Sussex County Extension Office, Georgetown, DE (Cost \$10)

March 29 4 p.m. - 6 p.m.

Kent County Extension Office, Dover, DE (Cost \$10)



This class is being offered to professional arborists and others in the green industry who often have trees and shrubs needed to be pruned for safety, health or aesthetic reasons. Participants will become familiar with growing points, pruning specific species & schedules, reasons for pruning and techniques used to accomplish the desired 'end' result. We will also discuss and demonstrate equipment needed, care and safety issues. Bring your pruning tools and a pair of work gloves. We will be conducting a pruning activity.

Instructors: Richard Pratt and Dot Abbott

Beneficial Insect Identification

Credits: 2 Pest. (Categories 03,02,06)
1 CNP

June 8 6 p.m. - 8 p.m.

Sussex County Extension Office, Georgetown, DE (Cost \$10)

June 22 6 p.m. - 8 p.m.

New Castle County Extension Office, Newark, DE (Cost \$10)



Using Integrated Pest Management in your business? Correct I.D. is key to control of pests in the landscape. Enhance your skills at identifying beneficial insects in the landscape.

Instructor: Brian Kunkel



Diseases of Ornamental Plants Series

Credits: 2 Pest. (Categories 03,02) &
1 CNP/Each Session

September 7, 14, 21 4 p.m. - 6 p.m.

Kent County Extension Office, Dover, DE

(Cost \$25 for series)

In this series of presentations, you will learn about identification and control of important plant diseases in the landscape. The class will include basic plant pathology principles, as well as coverage of abiotic disorders that can mimic diseases. Common diseases of perennials, trees and shrubs will be used to illustrate typical diseases caused by fungi, bacteria, viruses and nematodes. This class is intended as an introduction to plant diseases in the landscape for the novice or someone wanting a refresher on basic disease identification and control principles. Each class will build upon the previous one, so attending all three classes is highly recommended. The first class will layout some of the principles of plant diseases including some of the fungal diseases. Class two will continue with fungal diseases and the last class will cover the bacterial and nematode diseases as well as some basics of fungicides and their use.

Instructor: Bob Mulrooney

2011 Delaware Cooperative Extension Horticulture Short Courses



Cooperative Extension

COLLEGE OF AGRICULTURE &
NATURAL RESOURCES

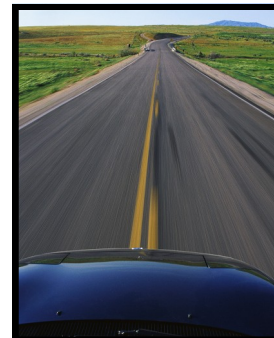
Delaware Cooperative Extension is willing to come to you!

If you have 10 or more people, we will conduct a workshop at your site on insects, diseases, weeds, cultural problems, sustainable landscapes, business skills or other nursery or landscape industry topics that interest you and your employees.

(Cost \$10/person)

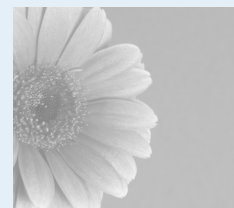
Scheduling is based on availability of the instructor with expertise in the topic you choose.

Contact your local County Extension Agent:
Carrie Murphy (302-831-2506), New Castle County
Tracy Wootten (302-856-7303), Sussex County



Delaware Cooperative Extension Horticulture Short Course Instructors:

Dot Abbott, Renewable Resources Extension Agent, UD
Sue Barton, Extension Ornamental Specialist, UD
Jeff Brothers, Plant Industries, Delaware Department of Agriculture
Valann Budischak, Extension Associate, Plant & Soil Sciences, UD
Brian Kunkel, Extension Ornamental IPM Specialist, UD
Bob Mulrooney, Extension Plant Pathologist, UD
Carrie Murphy, New Castle County Extension Agent, UD
Richard Pratt, ISA Certified Arborist-Hagley Museum & Library
Tracy Wootten, Sussex County Extension Agent, UD



Pesticide Applicators Testing Program:

Tests given at Delaware Department
of Agriculture (DDA), Dover, DE,
1-4 p.m. on
January 26, February 23,
March 30, and April 27, 2011

Questions? Contact Steve Carter,
302.698.4575 or
steved.carter@state.de.us
[http://ddd.delaware.gov/pesticides/
cert.shtml](http://ddd.delaware.gov/pesticides/cert.shtml)

Certified Nursery Professional Exam - March 2, 2011

Delaware Department of
Agriculture, Dover, DE

For More Information:
Valann Budischak, DNLA
(888)-448-1203
<http://www.dnlaonline.org>



Nutrient Management Questions?

Certification Classes:
[http://ag.udel.edu/extension/
NutriManage/sessionschedule.htm](http://ag.udel.edu/extension/NutriManage/sessionschedule.htm)

Continuing Education Classes:
[http://ag.udel.edu/extension/
NutriManage/continuinged.htm](http://ag.udel.edu/extension/NutriManage/continuinged.htm)
or

Contact Sydney Riggi at 302.856.2585
ext. 571, sydney@udel.edu

2011 Delaware Cooperative Extension Horticulture Short Courses



Cooperative Extension
COLLEGE OF AGRICULTURE &
NATURAL RESOURCES

Quick Study in QuickBooks—Using It In Your Green Industry Business

March 21 4:00 p.m.—7:00 p.m.

March 28 4:00 p.m.—6:00 p.m.

LIMIT 20 Participants

Kent County Extension Office, Dover, DE
Instructor: Karen Remick, Summit CPA Group LLC

(Cost \$25 or \$15/Session)

To register call the DNLA at 888/448-1203 or e-mail at dnlainc@comcast.net

Monday, March 21, 4:00-7:00pm

(includes light refreshments)

Getting Started in QuickBooks
Setting up QuickBooks
Working with Lists
Entering Sales Information
Estimating & Progress Invoicing
Receiving Payments & Making Deposits
Entering & Paying Bills



Monday, March 28, 4:00-6:00pm

Tracking Time
Working with Bank Accounts
Working with Credit Cards
Doing Payroll with QuickBooks
Customizing Forms & Writing QuickBooks letters



UNIVERSITY OF DELAWARE BOTANIC GARDENS' (UDBG) EVENTS

The University of Delaware Botanic Gardens sponsors events for gardeners and commercial landscapers. The UDBG is a wonderful resource for the nursery and landscape industry. The Spring plant sale is a great place to buy unusual plants with limited availability in the nursery and landscape trade. The sale benefits student internships as well as growth and development of the UDBG. **To register for programs, contact Melinda Zoehrer at 302-831-0153 or visit the website** for more information on visiting the garden, plant descriptions, educational tours and programs, and how to get involved. <http://ag.udel.edu/udbg/>

Plant Sale Highlights - Wednesday, March 16 from 7 - 9 p.m.

The Commons, Townsend Hall, College of Agriculture and Natural Resources in Newark
Free to UDBG Friends members; \$10 non-members
Lecture will feature many of the plants offered in the catalog and sale.

Guided Walk of 2011 Plant Sale Highlights - Thursday, March 31 from 4- 5:30 p.m.

Departing from Fischer Greenhouse.
Free to UDBG Friends members; \$5 non-members.
Dr. John Frett will take you on a guided walk to show you UDBG landscape size plants that will be offered in the plant sale and give a preview of the containerized plants. Max. 35 participants.

UDBG Plant Sale - Friday, April 29 from 3 - 7:00 p.m. and **Saturday, April 30** from 9:30 a.m. to 4 p.m. The UDBG spring plant sale is held on Ag Day each year. Plants include perennials, tender perennials, shrubs, small flowering trees, evergreens and shade trees. Plant sizes range from quarts to 15 gallons. The 2011 Plant Sale Catalog will be available digitally in mid- March on the UDBG website: <http://ag.udel.edu/udbg>

2011 Delaware Cooperative Extension Horticulture Short Courses



Cooperative Extension

COLLEGE OF AGRICULTURE & NATURAL RESOURCES

New Castle County

Register with: Carrie Murphy, New Castle County Extension Office
461 Wyoming Road, Newark, DE 19716
302-831-2506 or cjmurphy@udel.edu

Groundcover Series-Culture	February 9	4 p.m. - 5:30 p.m.
Groundcover Series-Pests	February 17	4 p.m. - 6 p.m.
Landscape Information Session	March 10	4 p.m. - 6 p.m.
Insect Short Course (Townsend Hall, Newark)	March 29, 31	4 p.m. - 7 p.m.
Beneficial Insect I.D.	June 22	6 p.m. - 8 p.m.

Kent County

Register with: Kent County Extension Office,
69 Transportation Circle, Dover, DE 19901
302-730-4000 or carolm@udel.edu

Greenhouse IPM Workshop (Del. Dept. of Ag)	February 12	9 a.m. - 12 p.m.
Quick Study in QuickBooks	March 21	4 p.m. - 7 p.m.
Quick Study in QuickBooks	March 28	4 p.m. - 6 p.m.
Pruning Trees and Shrubs	March 29	4 p.m. - 6 p.m.
Diseases of Ornamental Plants Series	Sept. 7, 14, 21	4 p.m. - 6 p.m.

Sussex County

Register with: Tracy Wootten, Sussex County Extension Office
16483 County Seat Highway, Georgetown, DE 19947
302-856-7303 or wootten@udel.edu

Groundcover Series-Culture	February 17	4 p.m. - 5:30 p.m.
Groundcover Series-Pests	February 24	4 p.m. - 6 p.m.
Pruning Trees and Shrubs	March 22	4 p.m. - 6 p.m.
Beneficial Insect I.D.	June 8	6 p.m. - 8 p.m.

Visit Delaware Cooperative Extension on the web:
<http://ag.udel.edu/extension>



Call or email your local Extension office to register for any and all courses.

It is the policy of the Delaware Cooperative Extension System that no person shall be subjected to discrimination on the grounds of race, color, sex, disability, age or national origin.